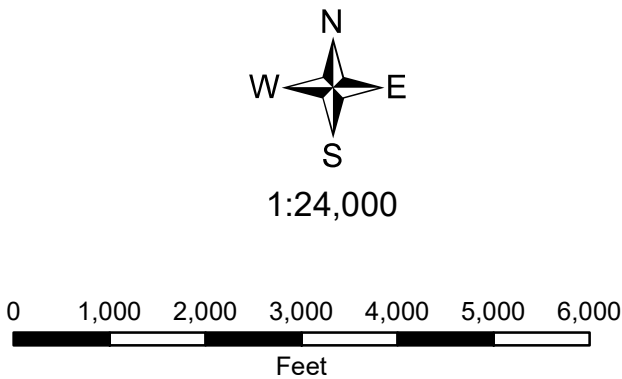
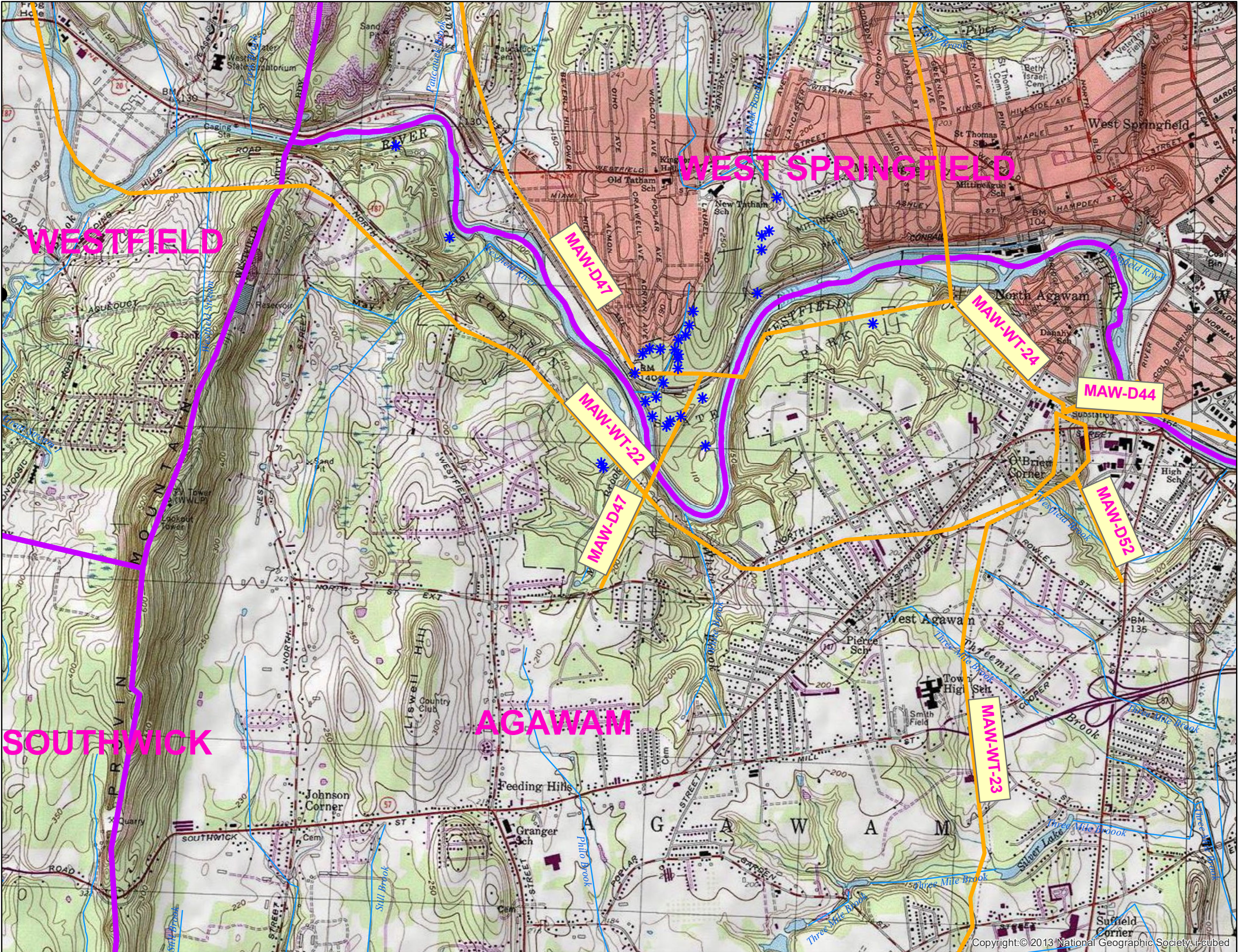


Eversource Energy  
Western, MA  
2021 Yearly  
Operational Plan  
AGAWAM

Rights of Way MAW-WT-22,  
MAW-WT-23, MAW-WT-24,  
MAW-D44, MAW-D47,  
and MAW-D52



- 2021 Eversource Energy Electric Rights-of-Way
- Emergency Surface Water Well
- Ground Water Well
- Non-Transient, Non-Community Well
- Proposed Well
- Surface Water Well
- Transient, Non-Community Well
- Private Well
- NHESP Certified Vernal Pools
- Perennial Rivers and Streams
- Intermittent Rivers and Streams
- Mass Town Lines
- Mass Zone A (identifies surface waterbodies, tributaries and associated waterbodies, follow Sensitive Area treatment methods per 333 CMR 11.04)



Source: "Office of Geographic and Environmental Information (Mass GIS), Commonwealth of Massachusetts, Executive Office of Energy and Environmental Affairs".  
Public Water Supply data provided by MA DEP Drinking Water Program, December 14, 2020 DEP Public Water Supplies